

## Equine Muscle Biopsies

Finn Pathologists has a dedicated team of experienced equine histopathologists, and an efficient, high quality histopathology laboratory which can handle a wide range of biopsy specimens.

Some samples, however, require techniques or stains which we are unable to perform in our laboratory. In many cases these can be quickly and easily sent to another referral laboratory, so that the case can continue to be managed by us, and our team can give you the best overall interpretation of the histopathology results.

Muscle biopsies for the investigation and diagnosis of equine neuromuscular diseases often present a different challenge, in that fresh frozen samples are preferred for many of the diagnostic tests (special stains and immunohistochemical stains).

We are unable to process fresh frozen material (which requires a cryostat). In many cases therefore when you are considering muscle biopsy, a wider range of tests will be available if samples are sent directly to a specialist neuromuscular laboratory.

The specialist neuromuscular laboratory will also be able to give guidance on the best biopsy location based upon your differential diagnosis, and give advice on optimal sample storage and shipping, specific to their laboratory.

If you are considering muscle biopsy and would like to discuss this with one of our team, please do not hesitate to contact us on the usual numbers. Alternatively, contact with one of the specialist neuromuscular laboratories can be made directly (details below).

**Royal Veterinary College** Comparative neuromuscular diseases laboratory  
<https://www.rvc.ac.uk/research/facilities-and-resources/comparative-neuromuscular-diseases-laboratory/diagnostic-services>

**Royal (Dick) School of Veterinary Studies** Neuromuscular pathology laboratory  
<https://www.ed.ac.uk/vet/services/easter-bush-pathology/our-services/neuromuscular>

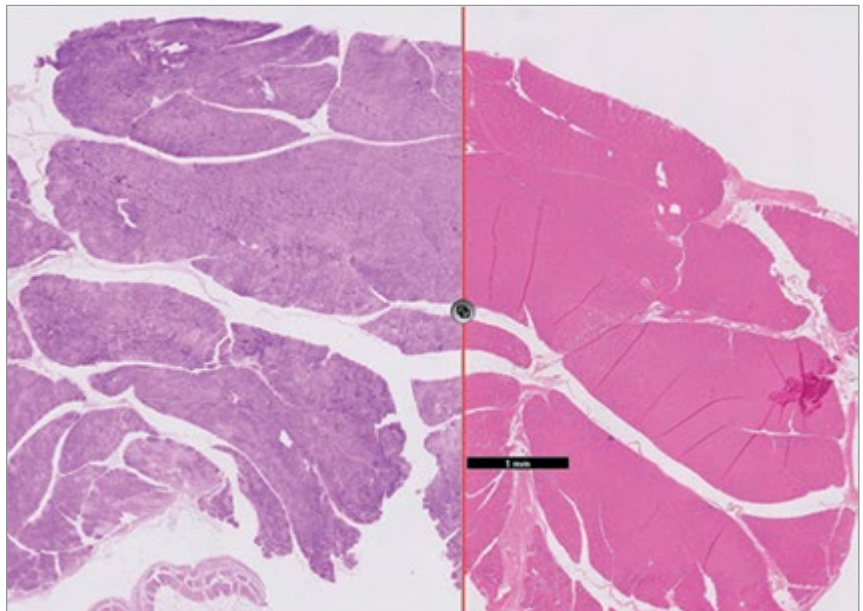


Figure 1: Muscle biopsy, PAS and H&E stains

**Axiom Veterinary Laboratories Ltd.**

The Manor House • Brunel Road • Newton Abbot • Devon • TQ12 4PB

Tel: 01626 355655

admin@axiomvetlab.co.uk